



GAT MONTHLY MEMBERSHIP PROGRESS REPORT

Results as of: 1/31/2023

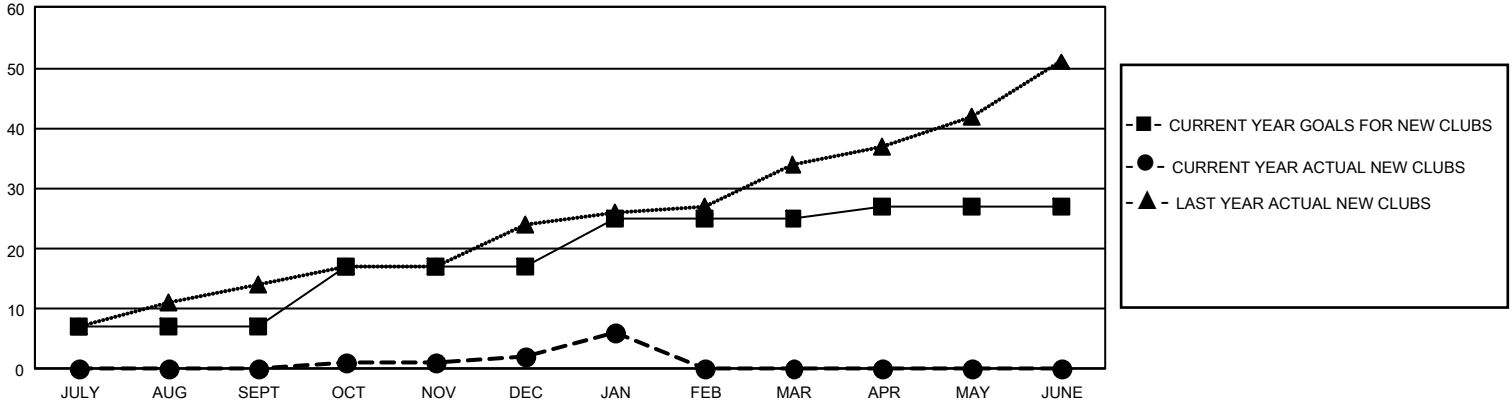
GMT Constitutional Area 8, Group A

REPORT DOES NOT INCLUDE CLUBS IN UNDISTRICTED AREAS.

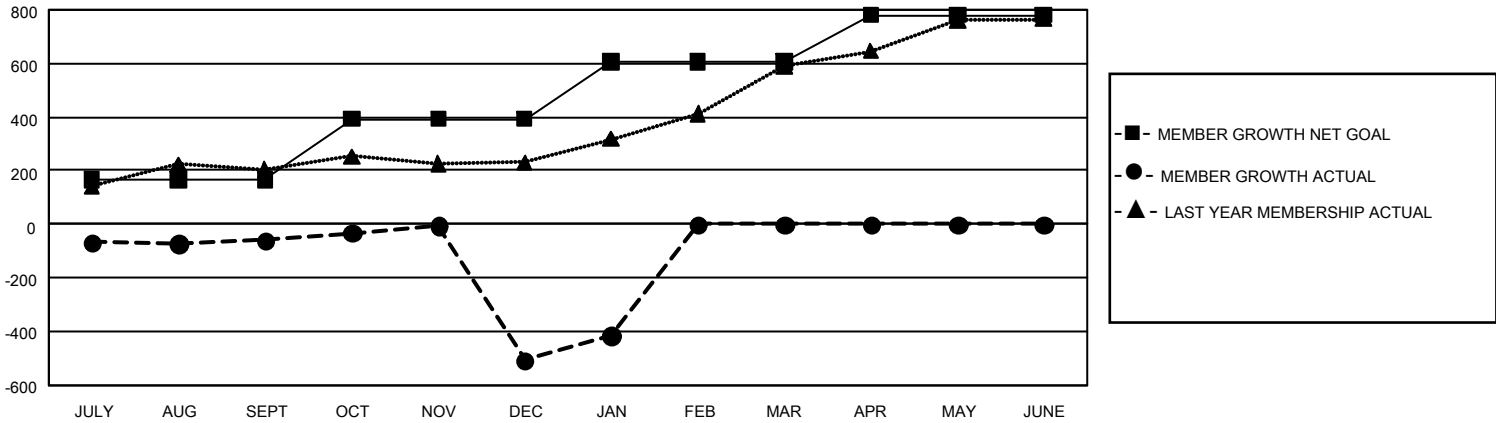
Clubs			
RESULTS FOR 2022-2023			
QUARTER	NEW CLUB GOAL	NEW CLUBS	DROPPED CLUBS
JULY/AUG/SEPT	21	0	2
OCT/NOV/DEC	30	2	15
JAN/FEB/MAR	24	4	1
APR/MAY/JUNE	6	0	0

Members			
RESULTS FOR 2022-2023			
QUARTER	MEMBER GROWTH NET GOAL	MEMBER GROWTH ACTUAL	DROPPED MEMBERS ACTUAL (including transfers)
JULY/AUG/SEPT	167	191	228
OCT/NOV/DEC	225	236	676
JAN/FEB/MAR	215	178	64
APR/MAY/JUNE	174	0	0

GOALS AND ACTUAL NEW CLUBS CUMULATIVE



GOALS AND ACTUAL MEMBERS CUMULATIVE



DROPPED CLUBS: 18	157 CLUBS OF 397 ADDED 1 OR MORE NEW MEMBERS	GENDER DISTRIBUTION	
		MALE 6,196 (70.23%) FEMALE 2,625 (29.75%) NON BINARY 0 (0.00%) PREFER NOT TO ANSWER 2 (0.02%)	
DROPPED MEMBERS		CLICK HERE FOR CUMULATIVE MEMBERSHIP DATA	TOTAL FAMILY UNIT MEMBERS 184
DECEASED 21 CLUB CANCELLED 347 OTHER 600 TOTAL 968			FAMILY MEMBERS PAYING HALF DUES 95